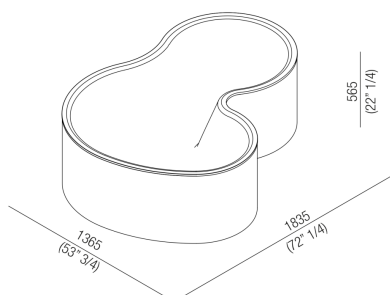




Bathtubs DR
AVAS1090Z

, 2014
bathtub



Finishes



Natural oak
AVAS1090Z



Brown oak
AVAS1090Z



Dark oak
AVAS1090Z



Teak
AVAS1090Z



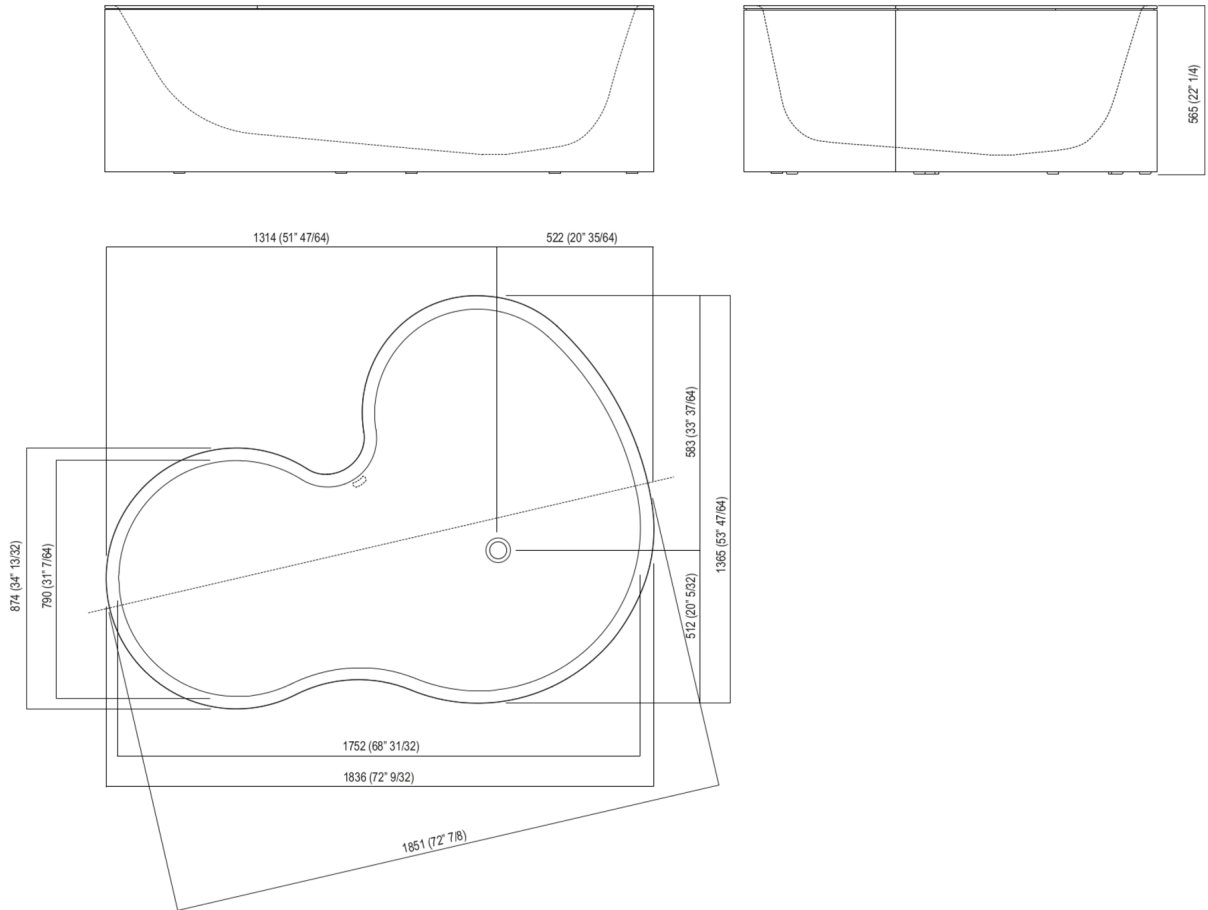
white Solid surface
AVAS1090Z

Bathtub in white Solid surface with paneling in Okoumè plywood in the finishes natural, brown, dark oak or teak, overflow waste trap with incorporated overflow circuit, no tap holes; taps can be floor or wall mounted. Water supply from the inside of bathtub is possible too. Chromed waste trap included.
For an easier installation of the bathtubs we recommend to use the template for the positioning of the waste trap AKITPZVAS.
Materials used: Wood, Solid Surface.

Width:	183.5 cm	72"1/4 inches
Height:	56.6 cm	22"1/4 inches
Depth:	136.5 cm	53"3/4 inches
Capacity:	400.0 l	106 gal
Weight:	85.0 kg	187 lbs
Packaging measurements:	205 x 153 x 85 cm	80"6/8 x 60"2/8 x 33"4/8 inches
Weight with packaging:	180.0 kg	397 lbs

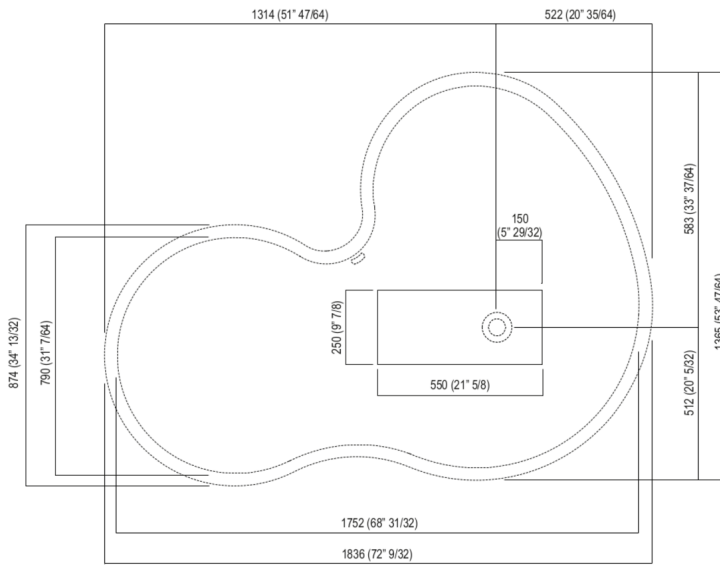


Main dimensions



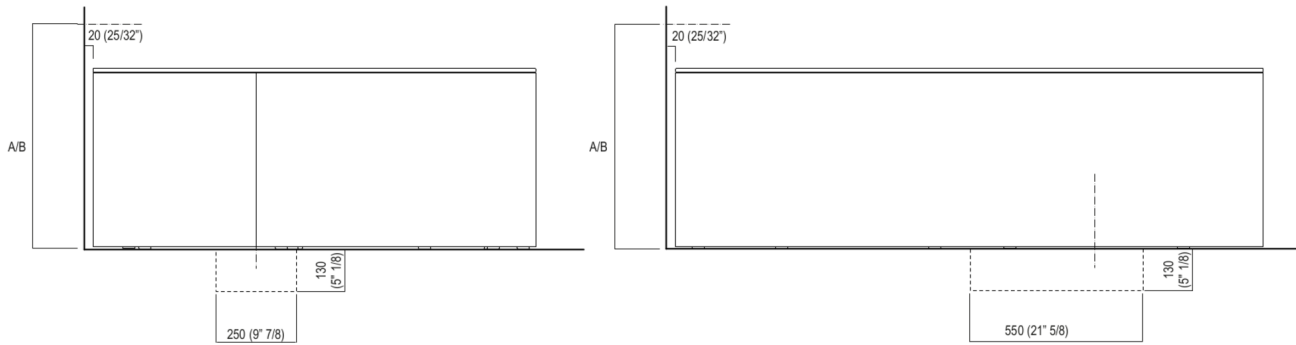


Dimensions for recess





Dimensions for wall mounted taps



	A*	B**
FEZ (ARUB050000L, ARUB051000L, ARUB150000C, ARUB151000C, ARUB1089S, ARUB190000C, ARUB191000C, ARUB1091S)	700 (27" 1/2)	-
MEMORY (ARUB1076S, ARUB1077S, ARUB1040S)	700 (27" 1/2)	-
SUITE (ARUB1107S)	700 (27" 1/2)	-
SQUARE (ARUB0932N, ARUB0933N)	-	700 (27" 1/2)
SEN (ASEN0912V)	-	700 (27" 1/2)

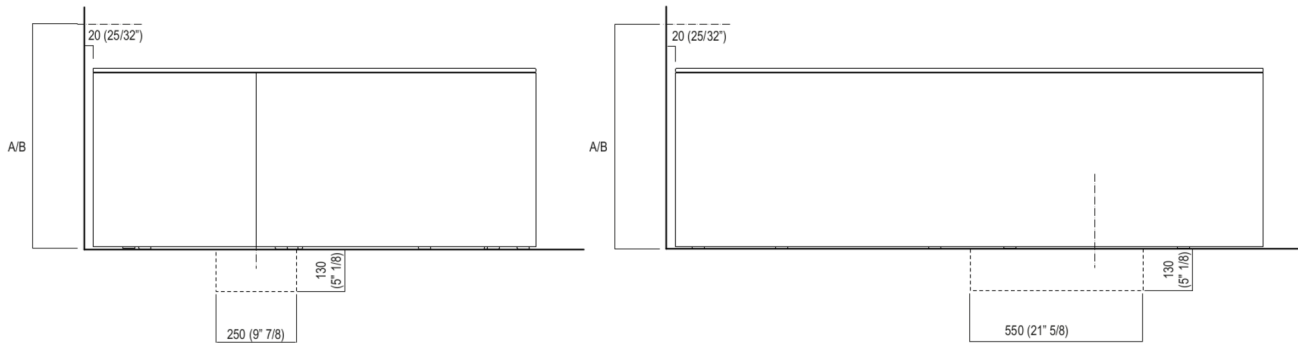
Per un corretto posizionamento del pozzetto e della rubinetteria è necessario utilizzare la dima in cartone con sagoma uguale al profilo della vasca.

For a correct positioning of the recess and the tap it is necessary to use the carton template with the shape of the bathtub.

* inserasse gruppo / axial distance for tap
** filo inferiore gruppo / Tap's lower edge



Dimensions for freestanding spouts



	A*	B**
FEZ (ARUB050000L, ARUB051000L, ARUB150000C, ARUB151000C, ARUB1089S, ARUB190000C, ARUB191000C, ARUB1091S)	700 (27" 1/2)	-
MEMORY (ARUB1076S, ARUB1077S, ARUB1040S)	700 (27" 1/2)	-
SUITE (ARUB1107S)	700 (27" 1/2)	-
SQUARE (ARUB0932N, ARUB0933N)	-	700 (27" 1/2)
SEN (ASEN0912V)	-	700 (27" 1/2)

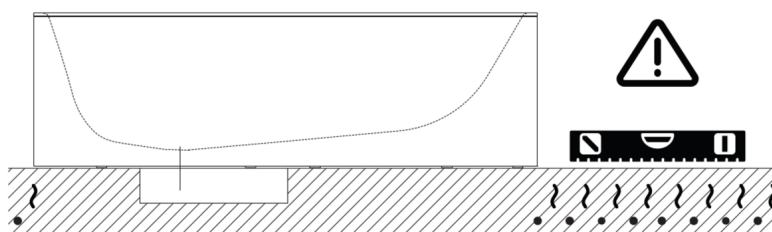
Per un corretto posizionamento del pozzetto e della rubinetteria è necessario utilizzare la dima in cartone con sagoma uguale al profilo della vasca.

For a correct positioning of the recess and the tap it is necessary to use the carton template with the shape of the bathtub.

* inserasse gruppo / axial distance for tap
** filo inferiore gruppo / Tap's lower edge



Note



La vasca deve essere installata su un pavimento perfettamente piano.
The bathtub must be positioned on a flat floor surface.

E' necessario predisporre a pavimento un pozzetto.
It is necessary to prepare a recess in the floor.

Evitare di realizzare impianti di riscaldamento nell'area sottostante la vasca.
Avoid the installation of floor heating plants in the area under the bathtub.